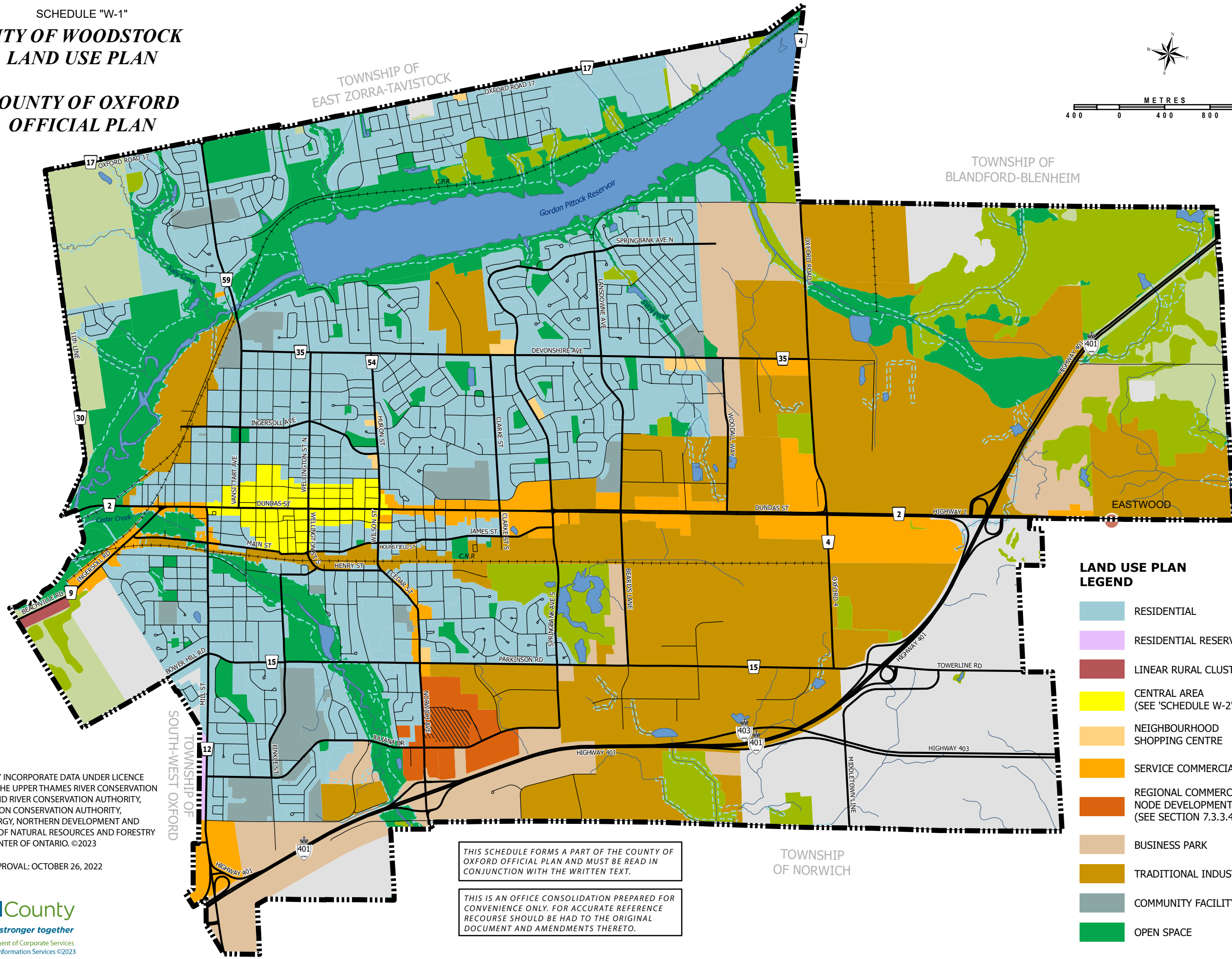
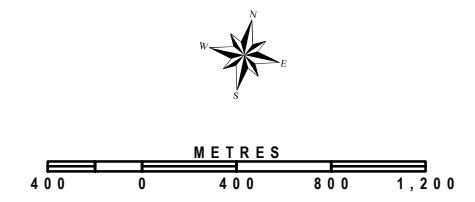


SCHEDULE "W-1"
CITY OF WOODSTOCK
LAND USE PLAN
COUNTY OF OXFORD
OFFICIAL PLAN

SCHEDULE "W-1"



LAND USE PLAN LEGEND

- | | | | |
|--|--|------------------------|--|
| | RESIDENTIAL | | ENVIRONMENTAL PROTECTION |
| | RESIDENTIAL RESERVE | | AGRICULTURAL RESERVE |
| | LINEAR RURAL CLUSTER | | FUTURE URBAN GROWTH |
| | CENTRAL AREA (SEE "SCHEDULE W-2") | | REGIONAL COMMERCIAL NODE (See Section 7.3.3.4.3) |
| | NEIGHBOURHOOD SHOPPING CENTRE | | RURAL CLUSTERS |
| | SERVICE COMMERCIAL | | FLOODLINE |
| | REGIONAL COMMERCIAL NODE DEVELOPMENT (SEE SECTION 7.3.3.4.2) | BASE MAP LEGEND | |
| | BUSINESS PARK | | MUNICIPAL BOUNDARY |
| | TRADITIONAL INDUSTRIAL | | MAJOR ROADS |
| | COMMUNITY FACILITY | | OTHER ROADS |
| | OPEN SPACE | | RAILWAY |
| | | | WATERCOURSE |

NOTES: THIS MAP MAY INCORPORATE DATA UNDER LICENCE AGREEMENT(S) WITH THE UPPER THAMES RIVER CONSERVATION AUTHORITY, THE GRAND RIVER CONSERVATION AUTHORITY, THE LONG POINT REGION CONSERVATION AUTHORITY, THE MINISTRY OF ENERGY, NORTHERN DEVELOPMENT AND MINES, THE MINISTRY OF NATURAL RESOURCES AND FORESTRY AND THE QUEEN'S PRINTER OF ONTARIO. ©2023

COUNTY COUNCIL APPROVAL: OCTOBER 26, 2022



THIS SCHEDULE FORMS A PART OF THE COUNTY OF OXFORD OFFICIAL PLAN AND MUST BE READ IN CONJUNCTION WITH THE WRITTEN TEXT.

THIS IS AN OFFICE CONSOLIDATION PREPARED FOR CONVENIENCE ONLY. FOR ACCURATE REFERENCE RECOURSE SHOULD BE HAD TO THE ORIGINAL DOCUMENT AND AMENDMENTS THERETO.

TOWNSHIP OF NORWICH

TOWNSHIP OF BLANDFORD-BLENHEIM

TOWNSHIP OF EAST ZORRA-TAVISTOCK

TOWNSHIP OF SOUTH-WEST OXFORD