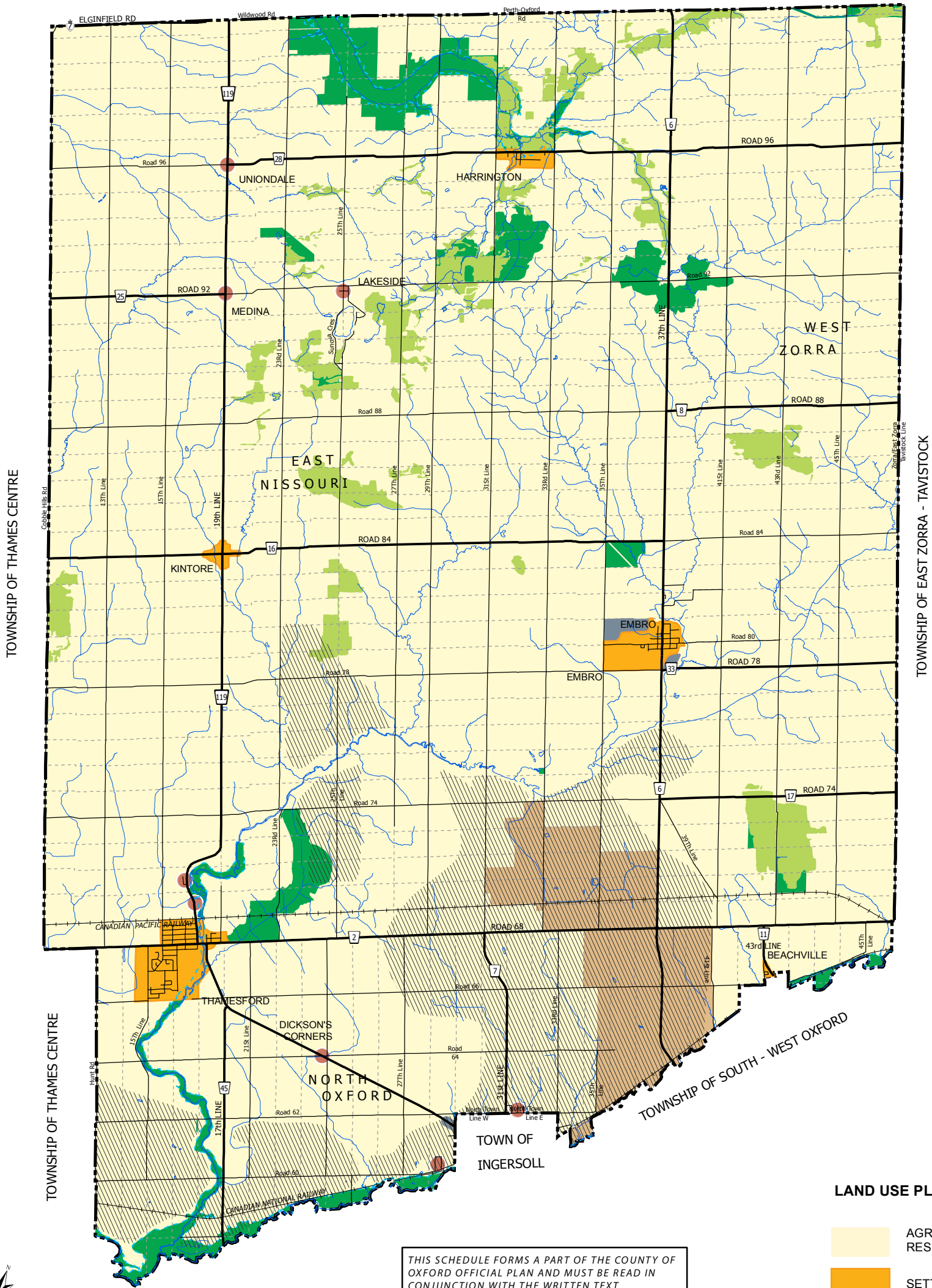


SCHEDULE "Z-1"
TOWNSHIP OF ZORRA
LAND USE PLAN
COUNTY OF OXFORD
OFFICIAL PLAN

TOWNSHIP OF PERTH SOUTH

TOWNSHIP OF PERTH EAST



TOWNSHIP OF THAMES CENTRE

TOWNSHIP OF EAST ZORRA - TAVISTOCK

TOWNSHIP OF THAMES CENTRE

TOWNSHIP OF SOUTH - WEST OXFORD

LAND USE PLAN LEGEND

- AGRICULTURAL RESERVE
- SETTLEMENT
- OPEN SPACE
- ENVIRONMENTAL PROTECTION
- QUARRY AREA
- FUTURE URBAN GROWTH
- LIMESTONE RESOURCE AREA
- RURAL CLUSTERS
- FLOODLINE

THIS SCHEDULE FORMS A PART OF THE COUNTY OF OXFORD OFFICIAL PLAN AND MUST BE READ IN CONJUNCTION WITH THE WRITTEN TEXT.

THIS IS AN OFFICE CONSOLIDATION PREPARED FOR CONVENIENCE ONLY. FOR ACCURATE REFERENCE RECOURSE SHOULD BE HAD TO THE ORIGINAL DOCUMENT AND AMENDMENTS HERETO.

BASE MAP LEGEND

- MUNICIPAL BOUNDARY
- MAJOR ROADS
- OTHER ROADS
- RAILWAY
- WATERCOURSE
- LOT LINES



COUNTY COUNCIL APPROVAL: JANUARY 25, 2017

NOTES: THIS MAP MAY INCORPORATE DATA UNDER LICENCE AGREEMENT(S) WITH THE UPPER THAMES RIVER CONSERVATION AUTHORITY, THE GRAND RIVER CONSERVATION AUTHORITY, THE LONG POINT REGION CONSERVATION AUTHORITY, THE MINISTRY OF NORTHERN DEVELOPMENT AND MINES, THE MINISTRY OF NATURAL RESOURCES AND THE QUEEN'S PRINTER OF ONTARIO. ©2017